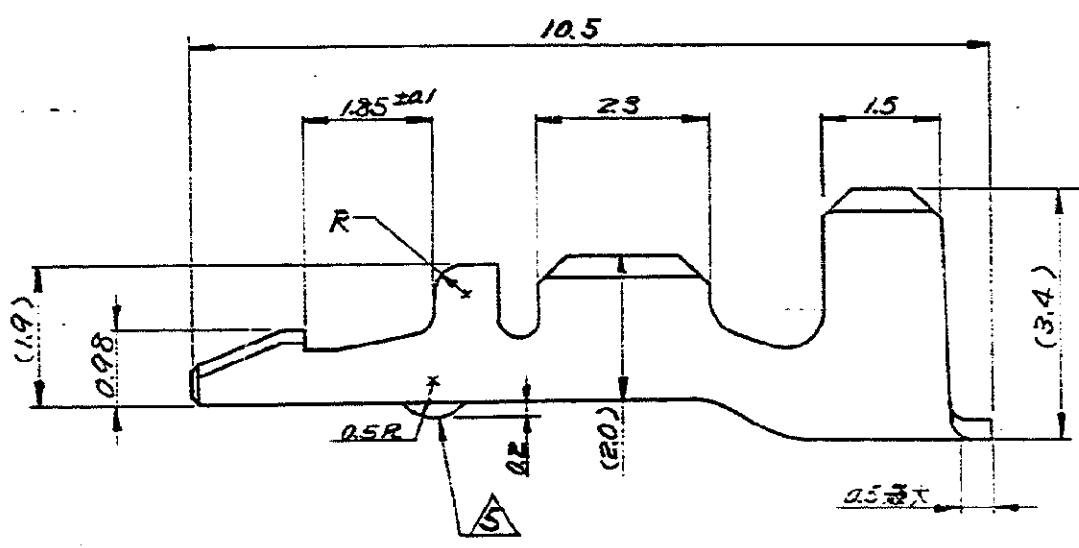
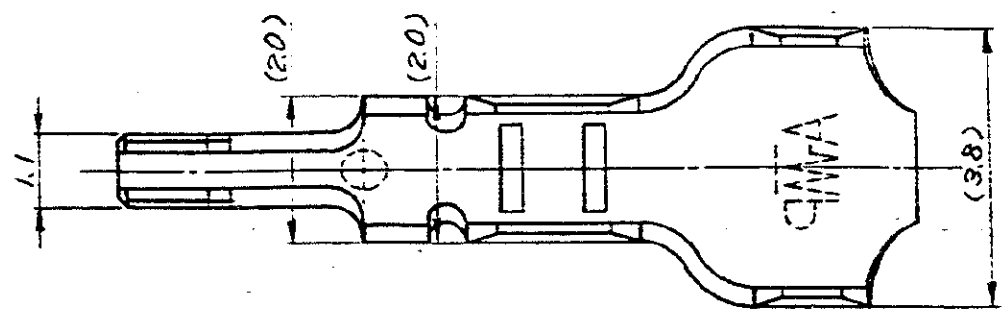


G-170197



- 注) 1. ()内は参考寸法
 2. 製品規格: 108-5087
 3. テスト用基板: 板厚 1.6 ±0.14
 孔径 1.2 ±0.03φ (F7H配合)
 4. 圧着規格: 114-5014
 △ 170197-1 ティンポル 有り
 170197-2 ティンポル 無し

DIMENSIONS IN MM DO NOT SCALE PRINT

ECN No. J8-4983 S.O 4/27/78
 F REVISED PER J8-4983 S.O 4/27/78
 F REVISED. Onk 4/27/78
 E ECN J8-4983 S.O 4/27/78

ECN No. J8-4400 9/12/77
 D REVISED PER J8-4400 9/12/77
 C REVISED (REV. B) YA 9S 1/16/77
 B REVISED (REV. B) YA 9S 10/1/77
 A1 REVISED 7S 1/12/75
 A REVISED (REV. A) H.S. JS 5/3/75

DESIGNED BY AMP JAPAN, LTD.	参考図面 (CUSTOMER COPY REFERENCE ONLY)
RIGHTS RESERVED AMP PRODUCTS COVERED BY PATENTS AND/OR PATENTS PENDING	日本エー・エム・ピー株式会社 TOKYO, JAPAN
MATERIAL 黄銅	AMP TRACE MARK
FINISH 編下地付錫めっき済	CLASS #
WIRE RANGE 02-0.56 AWG #2-20	TYPE #
INSULATION CA 1.6 ~ 2.3 mm 063-090 IN	

0 WAS P73-25250 H.S. J 5/1/74
 LTR. 2 REVISION RECORD DR. CHK. DATE
 DR. 2/1/74 SE 8-2-74
 H. Shikunari
 C 5/1/74 S. Shikunari

SCALE 10-1 LOC. SIZE J A C-170197 REV. F1
 ミニテア・アンパイン・ターミナル